

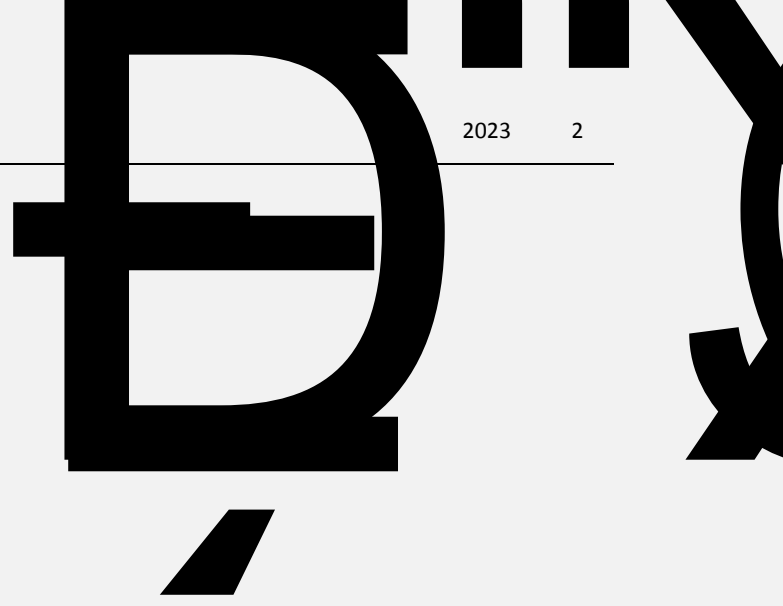
政策与形势 **1**

校园生活 **14**

书香短讯 **21**

科技前沿 **31**

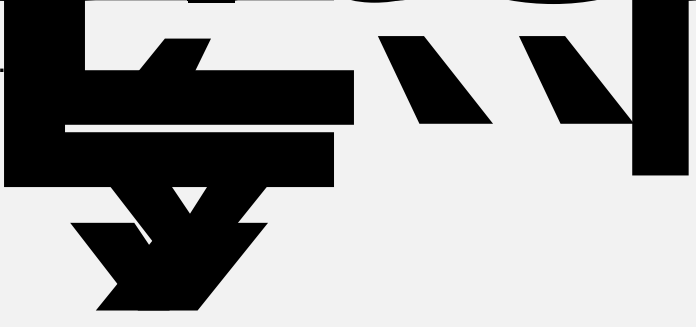
政策与形势



Ã i MT8 Ã Q1 fT5,,lã@ ARâ@ ¼

x

¤ È \$! X Š 3\$



4 8 10 58 59

2022

23

144

43

16

20

2009

11

校园书香



yzgdgc

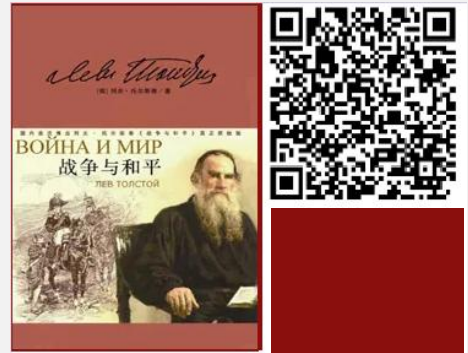
yzgdgc



1934 1936



9



图书馆利用常见问题解答

1

2

8:20 21:50

8:20 19:50

Wifi

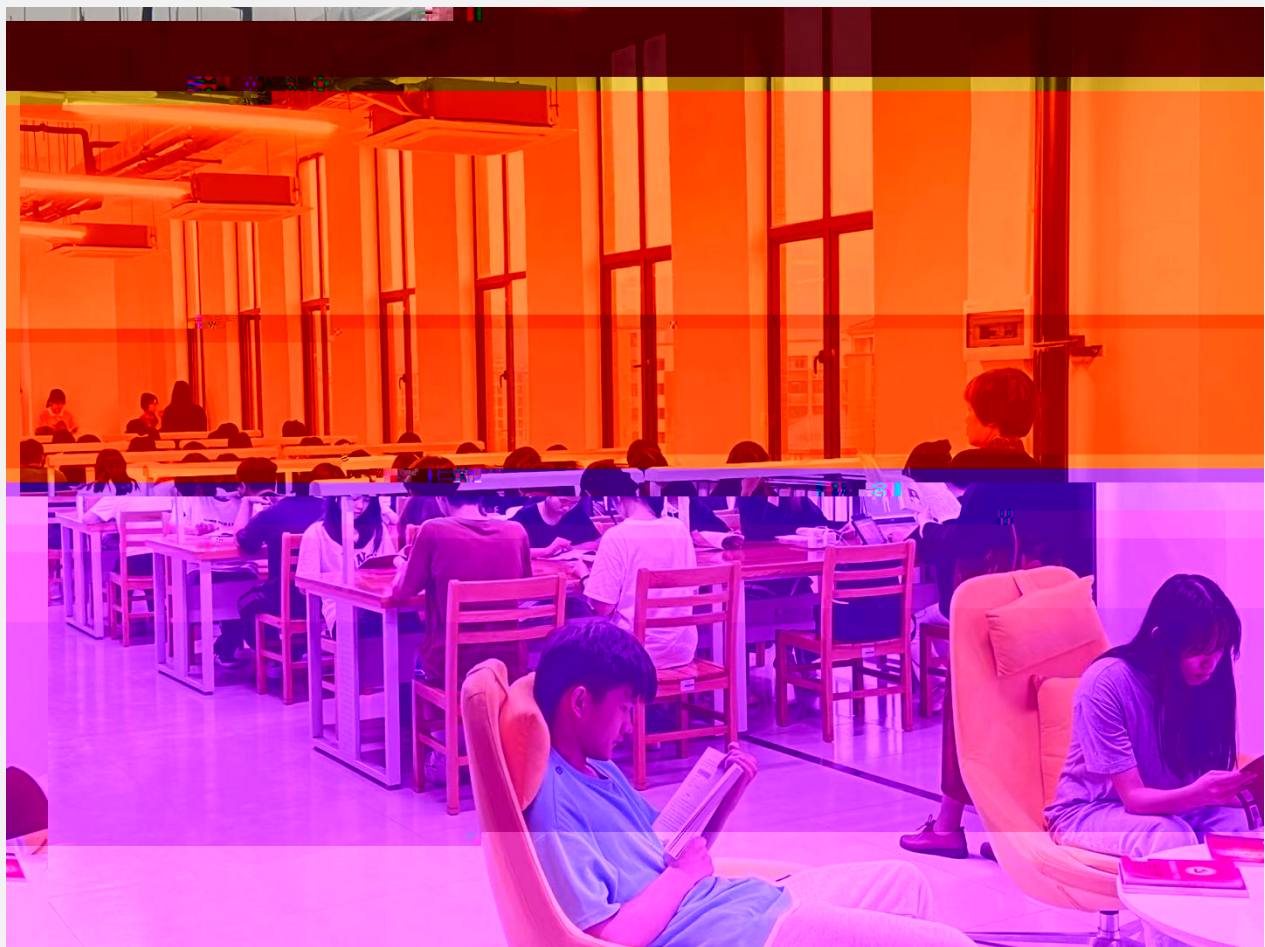
1	WiFi		
		TSG_FreeWiFi	6
		GDEP_FreeWiFi_5G GDEP_FreeWiFi	
	6		
2	WiFi		
		GDEP_WiFi	6
		GEP_WiFi	6
3			

020-87524007

0763-3919175

书香短讯

4 23



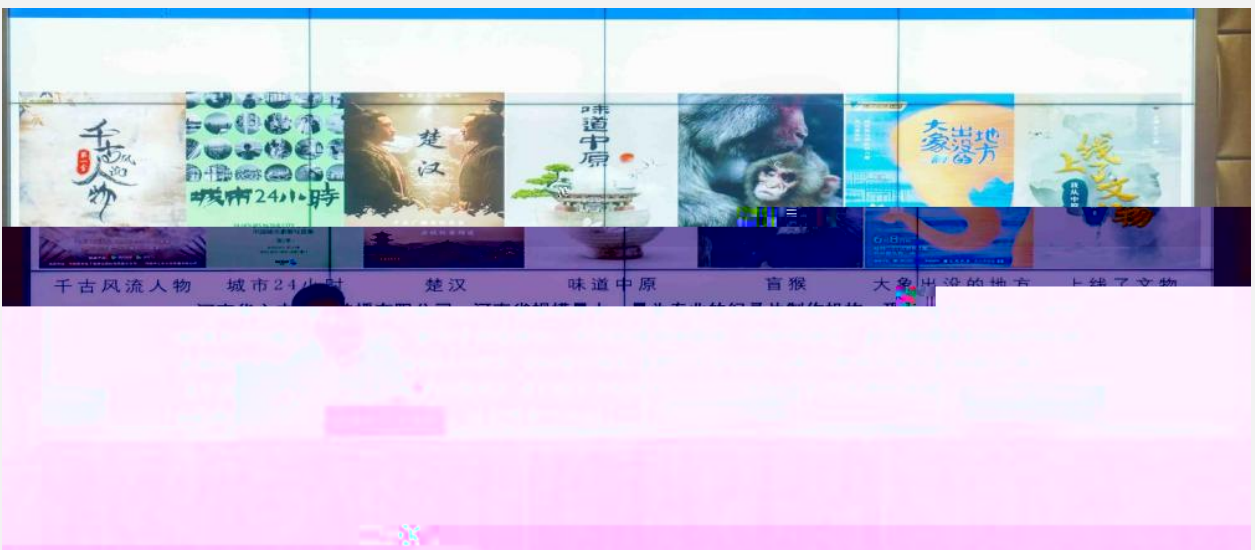
29

5

--

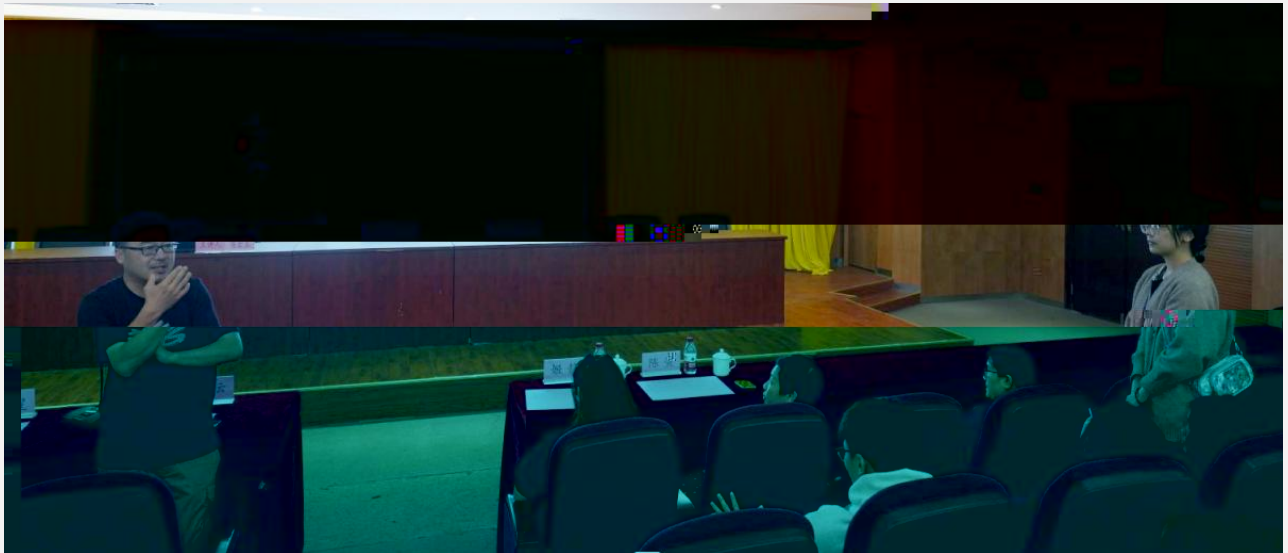


4 26



24

24



27

科技前沿



2022

2022

CGIAR



2021



DNA



IDC

2021-2022

1

GDP

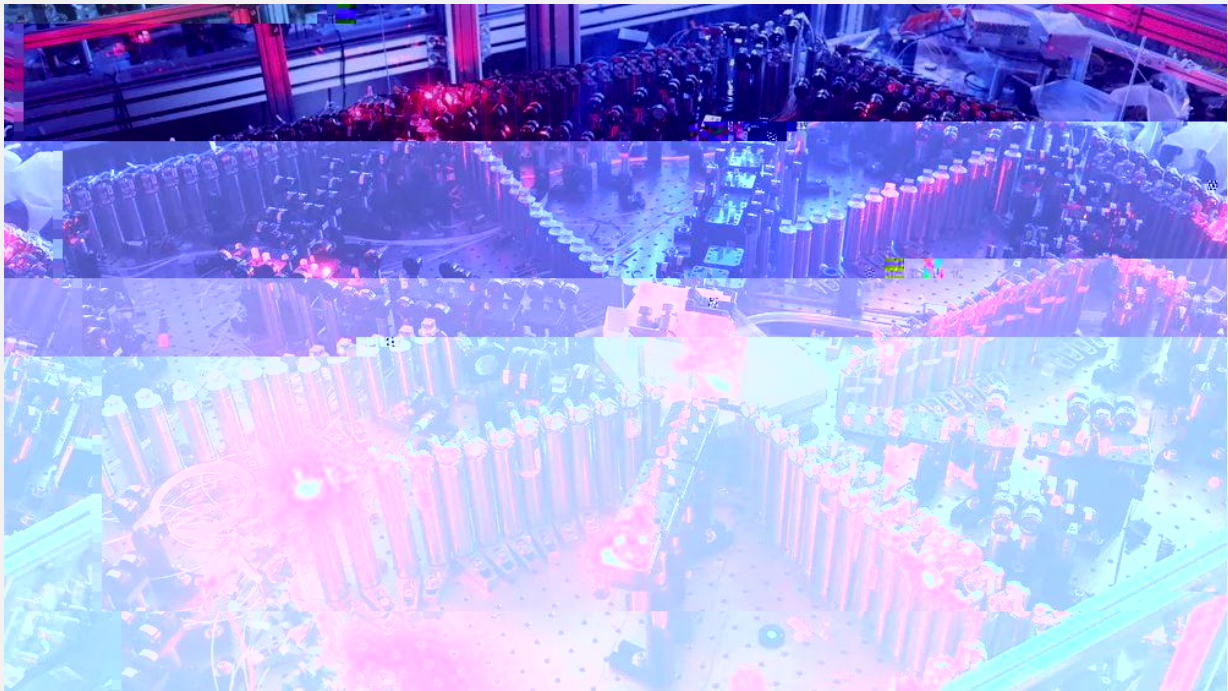
3.5

1.8

WEF

2027

17



Web

Gartner

2026

1/4

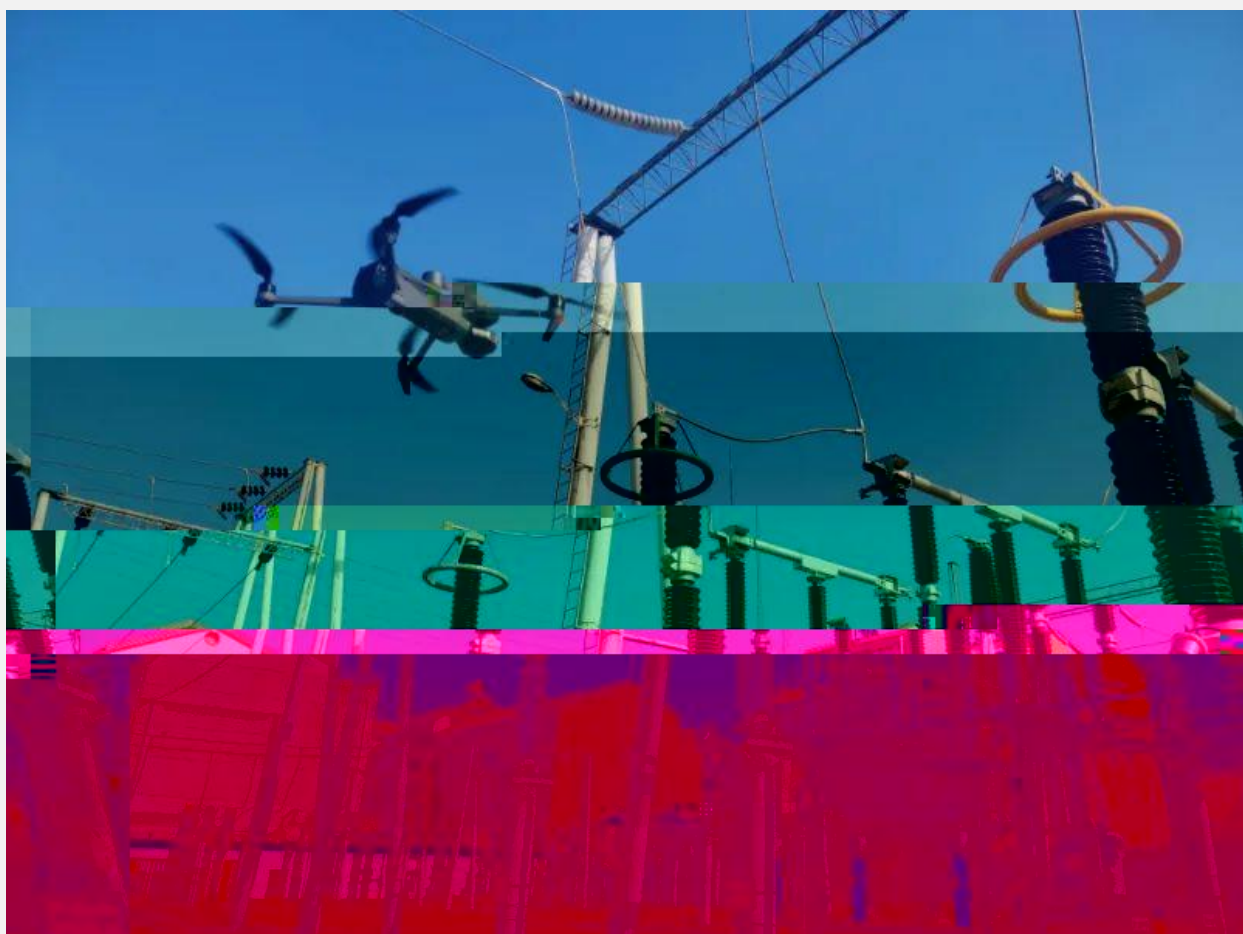
Accenture

2022

Web3



5G





3D





一、建筑形态的仿生

建筑形态的仿生是建筑仿生中最常见的仿生方式，人们通过对自然界的生物的形态进行模仿，从而创造出体积多变的建筑形态。

DNA

2030 IEA 2022
30%



产权及免责声明